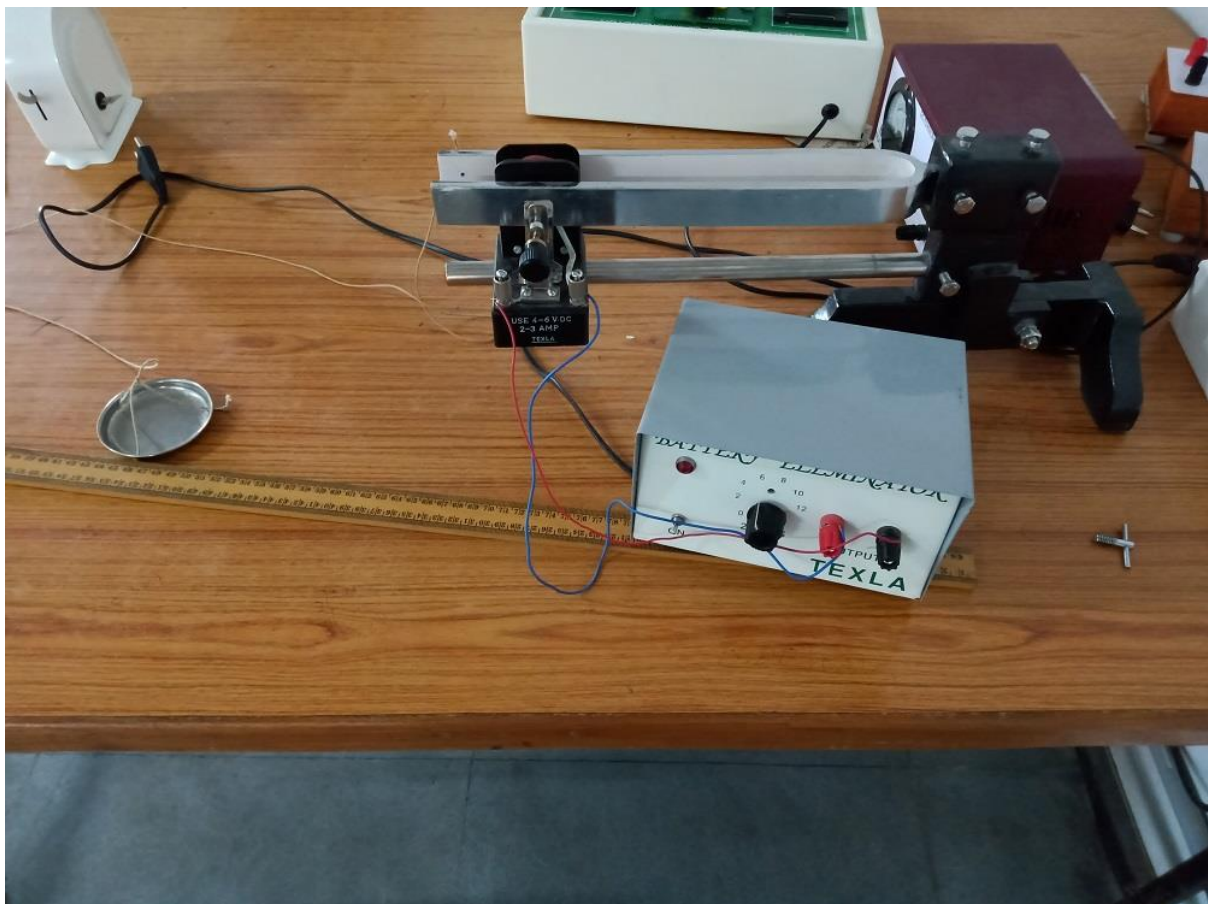


LIST OF EQUIPMENT IN Applied Physics/Engineering Physics lab

Melde's apparatus



Diffraction due to Single slit



Semiconductor Laser source



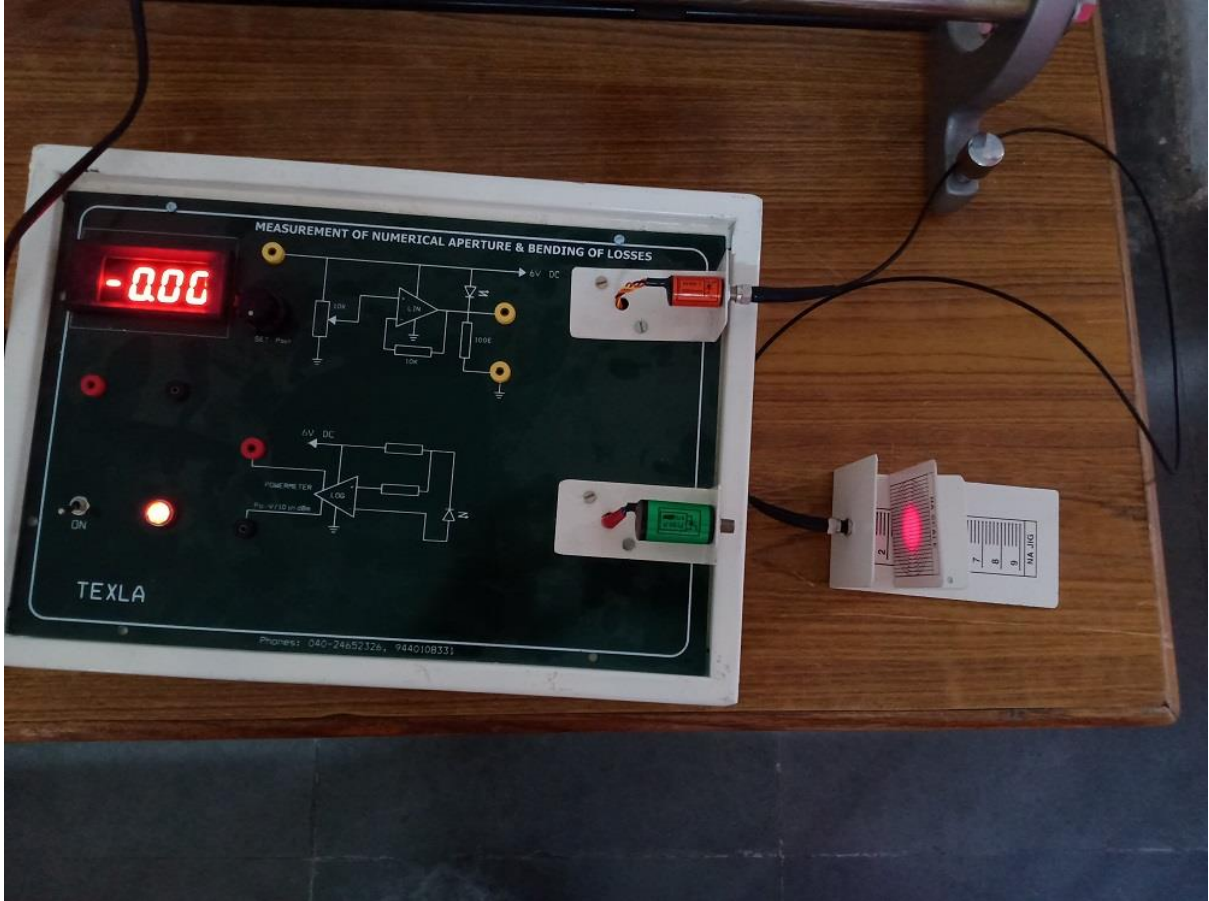
Optical bench



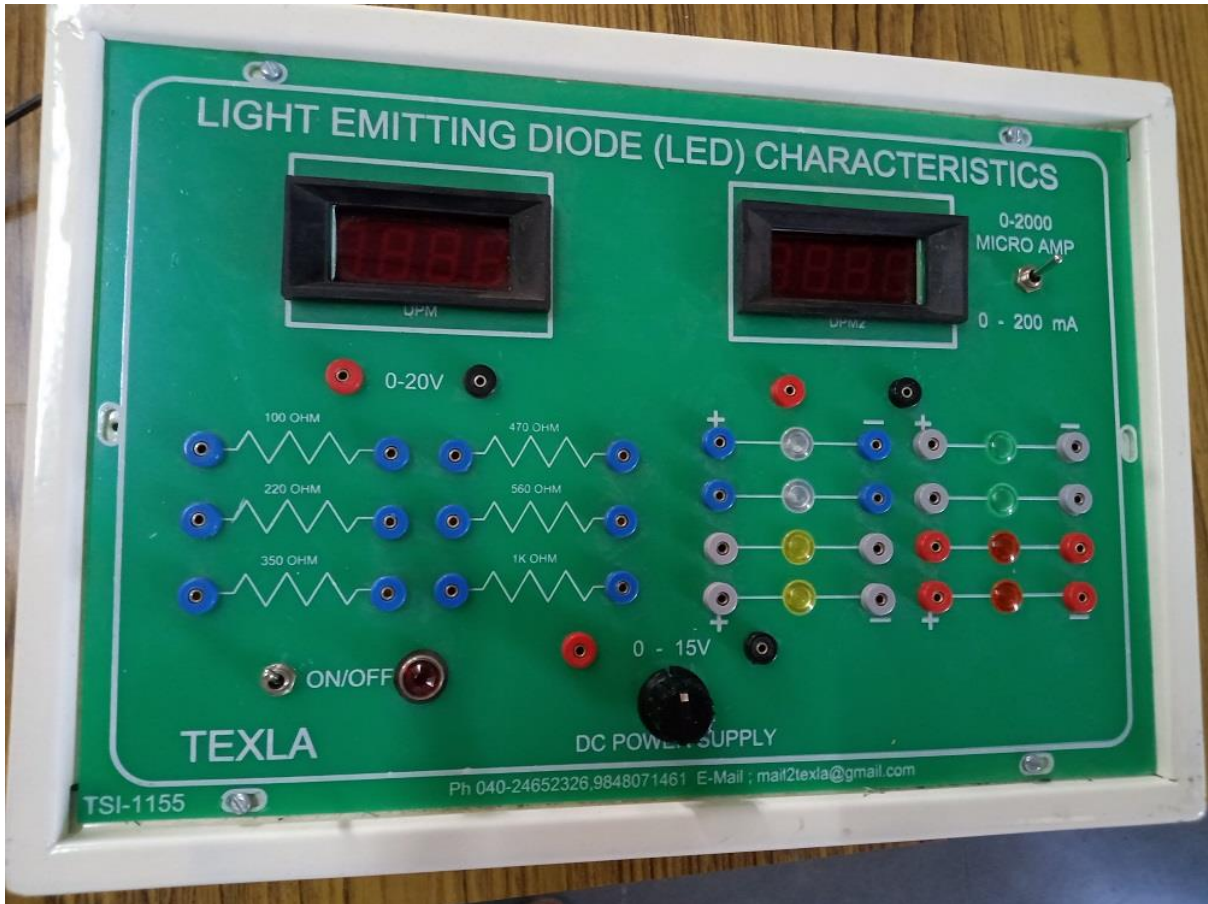
Diffraction through Multiple slit Grating



Numerical Aperture



V-I Characteristics of LED



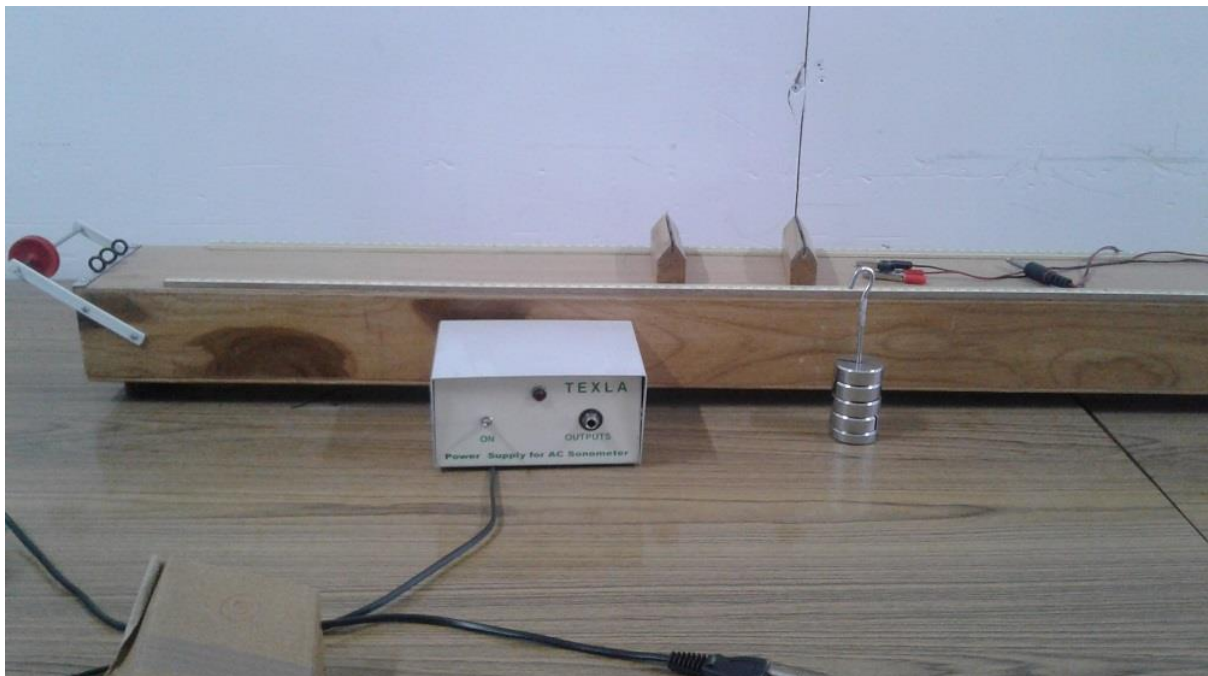
R-C circuit



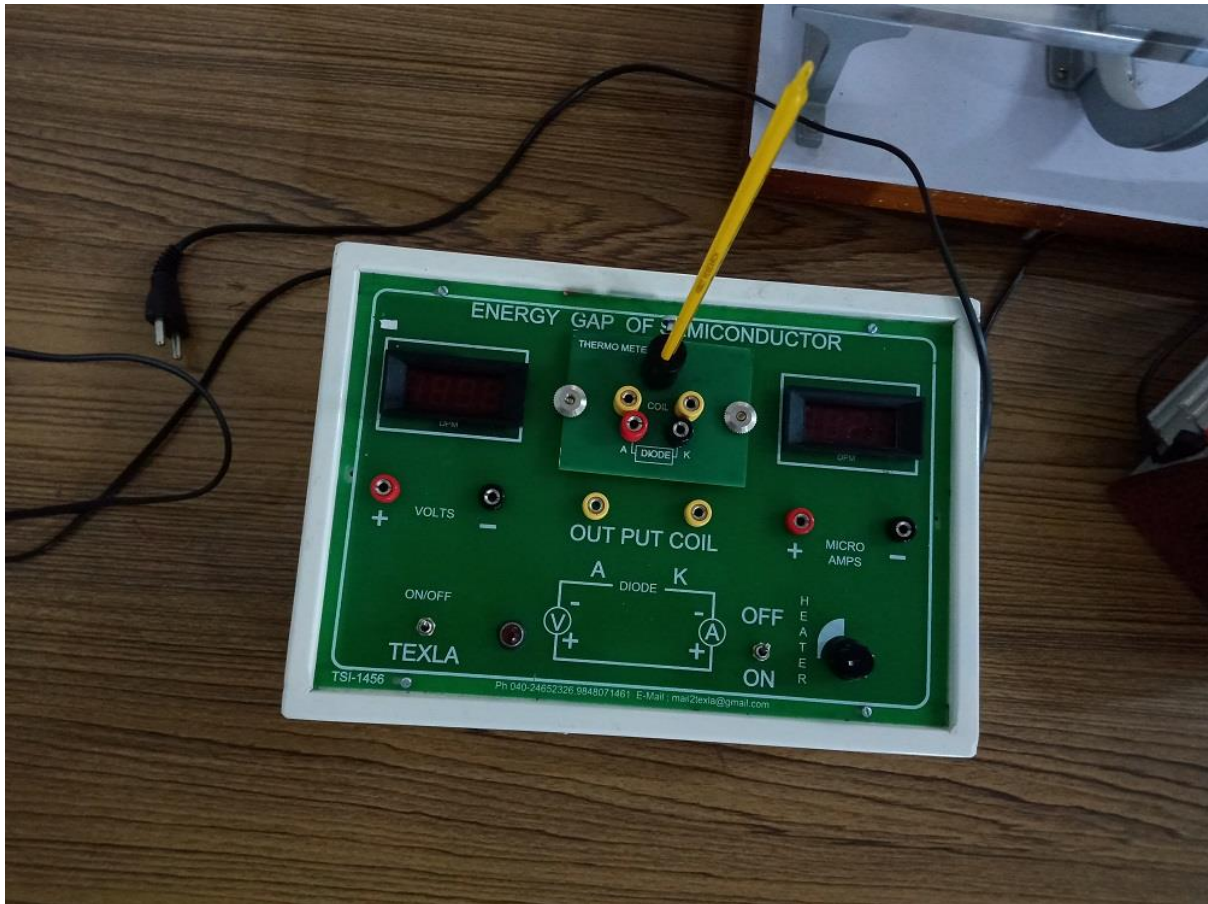
Solar cell Apparatus



A.C. Sonometer



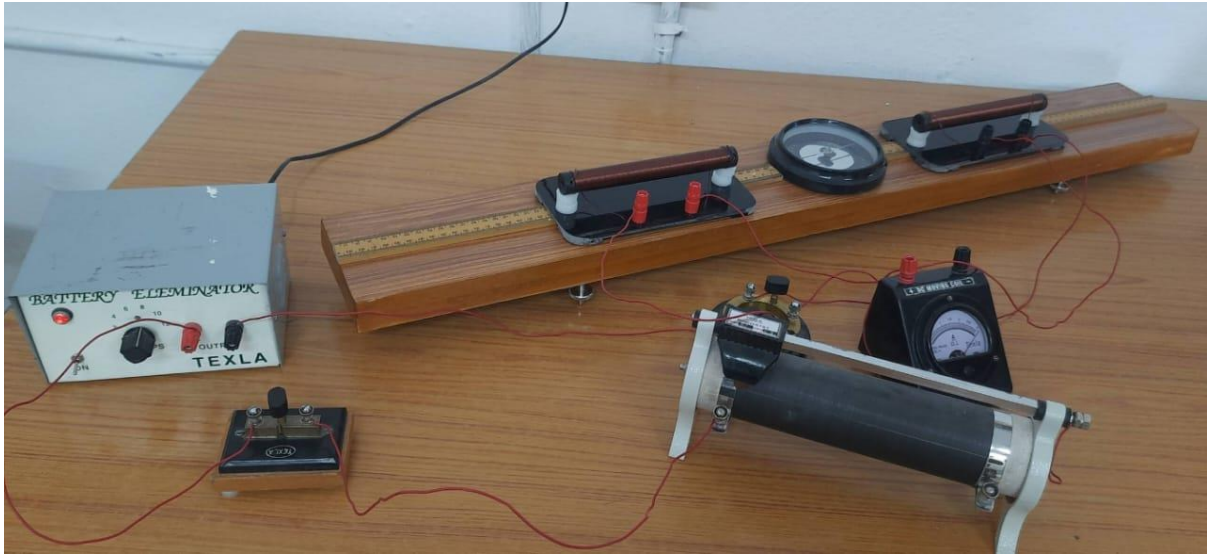
Energy Band Gap of a Diode



Torsional Pendulum



B-H CURVE



DI-ELECTRIC CONSTANT



Physics Lab

